

# AIRPAC HORIZONTAL PACKAGED SERIES

24,000 to 180,000 BTU/h

## HORIZONTAL SERIES

**MiniPac** HU024, HU036, HU048, HU060

**DualPac** HU072, HU096

**MaxPac** HU120, HU144, HU180

*Horizontal packaged self-contained, air cooled air conditioning systems.*

**AirPac units are compact and fit where others can't.**

- All units fit through a 32" doorway. Cabinet heights of 22" for 2-, 3-, 4- and 5-ton cabinet; 27" for 6- and 8-ton cabinet and only 29" for the 10-, 12-, and 15-ton cabinet.

**Versatile units adapt to your application to save you money.**

- Self-sealing refrigeration valves mean you won't lose the factory charge when splitting units in the field.
- Duct runs can be minimized – condenser and evaporator can be split up to 150' equivalent lengths.
- External static pressure is adjustable from 0.1" to 1.0" on both the evaporator and condenser with oversized blowers, cast iron pulleys and adjustable motor sheaves.
- 24 VAC control circuit with oversized transformer works with a variety of thermostats.

**Quality components and construction ensure safety and extend equipment life.**

- Full stainless steel condensate pan will not rust.
- Condensate carry-over is greatly reduced since all coils have an oversized face area.
- Refrigeration circuit is protected by high and low pressure safety switches, loss of air switch and a filter drier in each circuit.
- All models are approved by ETL, City of New York MEA and comply with Chicago Code, when specified.



**Units are quiet when operating.**

- Acoustic and thermal protection result from vapor sealed bottom pans and fully insulated cabinets.
- Motor/blower vibration is greatly reduced by mounting motors on adjustable motor mounts.
- Quiet operation is ensured since compressors are externally spring mounted with discharge mufflers.

**Service is easy.**

- Units can be serviced in the ceiling with removable compartment panels on both sides.
- No guess work about the refrigeration charge or moisture level when using the sight glass and moisture indicator in each circuit.
- Service calls are reduced and equipment life extended with inherently protected motors and compressors.

*The horizontal series saves valuable floor space and offers application flexibility. The MiniPac, DualPac and MaxPac units are perfect for cooling applications in new, historic and retrofit properties:*

- Mid- to High-rise Buildings
- Schools and offices
- Computer Rooms & Telecom Rooms
- Laboratories
- Stadiums and Arenas
- Warehouses and Factories

## Features and Benefits of Horizontal Series

Cabinet heights of 22" for 2-, 3-, 4- and 5-ton unit, 27" for 6- and 8-ton unit, and only 29" for 10-, 12- and 15-ton unit.

*AirPac units fit where others can't. All units fit through 32" doorway.*

**Removable compartment panels on both sides.**  
*Completely serviceable in the ceiling. No need to lower unit.*

**ETL listed and labeled. MEA approved 141-91-E.**  
*Ensures user safety.*

**Field splittable in minutes with no loss of factory charge.**  
*Adaptable unit saves time and money on the install.*

**Condenser and evaporator can be split up to 150' equivalent lengths.**  
*Units are versatile to meet your requirements. Tubing can be run rather than costly duct work.*

**Vapor sealed bottom pans with fiberglass lined cabinet.**  
*Provide acoustic and thermal protection.*

*Condenser Intake*

**Full stainless steel condensate pan.**  
*Condensate pan will not rust or degrade.*

**Oversized face area on all coils.**  
*Eliminates condensate carry-over and allows for higher sensible heat ratio.*

**Oversized belt driven ball-bearing centrifugal blowers, cast iron pulleys, and adjustable motor sheaves.**  
*Flexible field adjustable ESP from 0.1" to 1.0" on both the evaporator and condenser with standard motors and blowers.*

**Motors mounted on base mounted adjustable motor mounts--not on blowers.**  
*Reduce motor/blower noise and make motors and blowers easier to service.*

**Inherently protected motors and compressors.**  
*Reduce service calls and extend equipment life.*

**High and low pressure safety switches with lockout relay, loss of air flow switch, and filter drier in each circuit.**  
*Protect the refrigeration circuit and ensure trouble-free operation.*

**All compressors externally spring mounted with discharge mufflers.**  
*Ensure quiet operation.*

**Adjustable expansion valve with external equalizer in each circuit.**  
*Adjustable superheat for each application.*

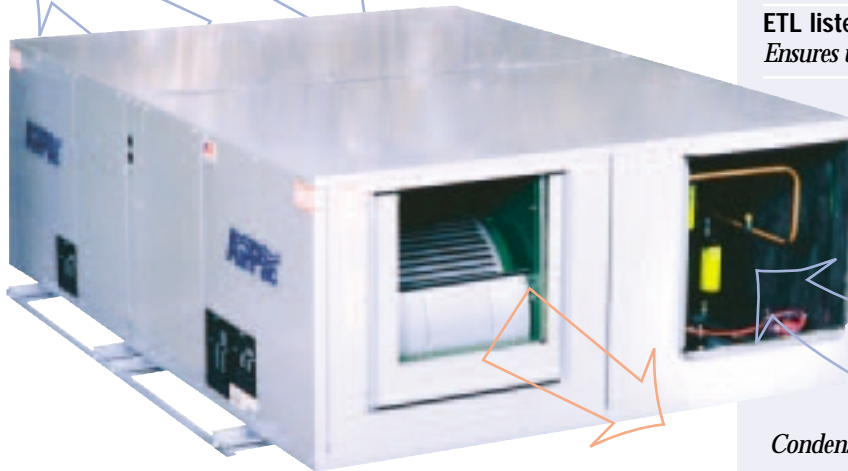
**Sight glass and moisture indicator in each circuit.**  
*No need to guess about refrigeration charge or moisture level.*

**24 VAC control circuit with oversized transformer.**  
*No high voltage thermostat wiring. Works with wide variety of thermostats.*

**2" pleated extended surface type filters mounted in each unit.**  
*No need to fabricate and install field mounted filter racks.*

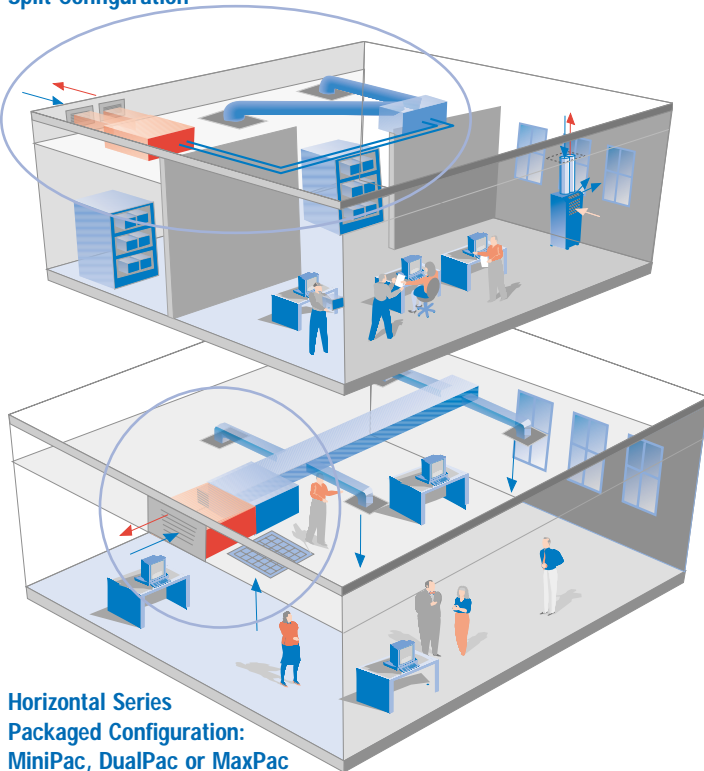
*Evaporator Return  
Room Air*

*Conditioned Air  
Evaporator Supply*



*Condenser Discharge  
Warm Air*

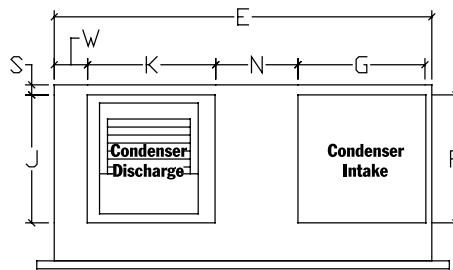
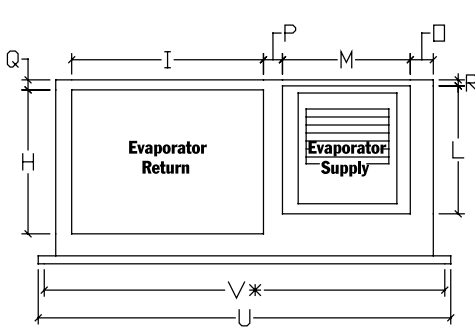
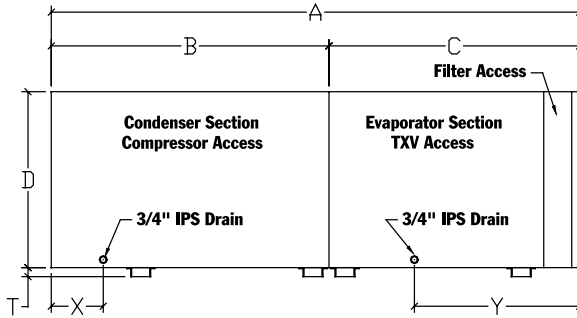
### Horizontal Series Split Configuration



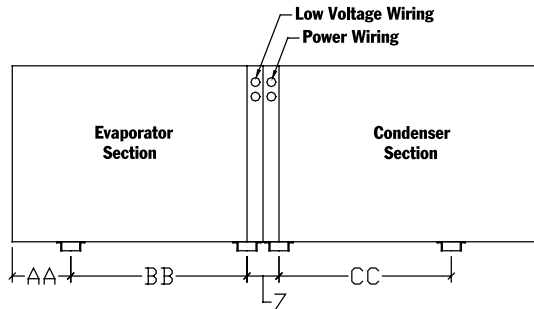
Horizontal Series  
Packaged Configuration:  
MiniPac, DualPac or MaxPac

# MiniPac 2-, 3-, 4- & 5-Ton Single-Compressor Air Conditioning System Dimensional Data

HU024, HU036, HU048, HU060



\* Center to center length for holes in hanging channel.



## Weight (lbs)

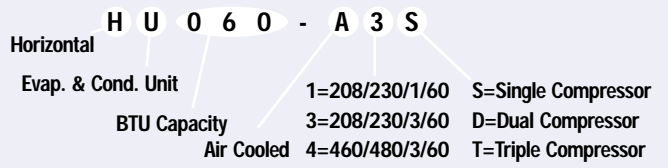
HU024 HU036	HU048 HU060
630	690

# HORIZONTAL SERIES

## Cabinet Dimensions (inches)

HU024, HU036, HU048, HU060

A	66-1/4
B	34-3/4
C	31-1/2
D	22
E	47-3/8
F	Cond Intake, height: 16
G	Conde Intake, width: 16
H	Evap Return, height: 18
I	Evap Return, width: 24
J	Cond Discharge, height: 16
K	Cond Discharge, width: 16
L	Evap Supply, height: 16
M	Evap Supply, width: 16
N	10-1/2
O	2-3/4
P	2-3/8
Q	1-1/4
R	1
S	1-1/4
T	1-1/8
U	53
V	50-1/2
W	4-1/4
X	6-1/2
Y	20-1/2
Z	4
AA	7-1/2
BB	22-1/4
CC	21-1/2



### Performance Data for MiniPac Series

Nominal Tons	Evaporator		Condenser		E.A.T.		75° Ambient		95° Ambient	
	CFM*	Fan Size	CFM*	Fan Size	DB	WB	Total	Sensible	Total	Sensible
2	800	12 x 9	1600	12 x 9	86	72	30,000	22,000	28,000	20,000
					80	67	29,000	21,000	27,000	19,000
					75	62	28,000	20,000	26,000	18,000
3	1200	12 x 9	2000	12 x 9	86	72	46,000	30,000	42,500	29,800
					80	67	43,000	29,000	39,500	27,000
					75	62	41,000	28,000	35,000	24,800
4	1600	12 x 9	2000	12 x 9	86	72	59,000	40,000	55,000	36,000
					80	67	58,000	39,000	51,000	35,000
					75	62	50,000	38,000	46,000	34,000
5	2000	12 x 9	3100	12 x 9	86	72	74,000	51,000	68,000	46,600
					80	67	70,000	49,000	63,000	45,000
					75	62	65,000	47,000	58,000	43,600

\*CFM field adjustable from 0.1" to 1.0" external static pressure.

### Electrical Data for MiniPac Series Packaged Unit Installation

Nominal Tons	Model	Voltage	Compressor		Condenser Motor		Evaporator Motor		Main Circuit	Max. Fuse
			LRA	RLA	HP	FLA	HP	FLA	Ampacity	Size
2	HU024-A1S	208/230/1/60	54	12.9	0.75	5.8	0.50	3.8	25.7	35
	HU024-A3S	208/230/3/60	73	8.7	0.75	2.5	0.50	1.9	15.3	25
	HU024-A4S	460/480/3/60	23	4.2	0.75	1.3	0.50	1.0	7.6	10
3	HU036-A1S	208/230/1/60	93	22.5	1.0	7.0	0.75	5.8	40.9	60
	HU036-A3S	208/230/3/60	110	14.3	1.0	3.1	0.75	2.5	23.5	35
	HU036-A4S	460/480/3/60	39	5.2	1.0	1.6	0.75	1.3	11.3	15
4	HU048-A3S	208/230/3/60	130	16.8	1.5	4.4	1.0	3.1	28.5	40
	HU048-A4S	460/480/3/60	45	6.3	1.5	2.2	1.0	1.6	14.1	20
5	HU060-A3S	208/230/3/60	150	21.4	3.0	8.2	1.5	4.4	39.4	60
	HU060-A4S	460/480/3/60	62	8.8	3.0	4.1	1.5	2.2	18.3	25

### Electrical Data for MiniPac Series Split Unit Installation

Nominal Tons	Model	Voltage	Condensing Unit						Evaporator		
			Compressor		Condenser Motor		Min. Circuit	Max. Fuse	Evaporator Motor		Max. Fuse
			LRA	RLA	HP	FLA	Ampacity	Size	HP	FLA	Size
2	HU024-A1S	208/230/1/60	54	12.9	0.75	5.8	21.9	35	0.50	3.8	4.5
	HU024-A3S	208/230/3/60	73	8.7	0.75	2.5	13.4	20	0.50	1.9	2.5
	HU024-A4S	460/480/3/60	23	4.2	0.75	1.3	6.6	10	0.50	1.0	1.5
3	HU036-A1S	208/230/1/60	93	22.5	1.0	7.0	35.1	50	0.75	5.8	7.0
	HU036-A3S	208/230/3/60	110	14.3	1.0	3.1	21.1	35	0.75	2.5	3.0
	HU036-A4S	460/480/3/60	39	5.2	1.0	1.6	10.1	15	0.75	1.3	1.5
4	HU048-A3S	208/230/3/60	130	16.8	1.5	4.4	25.4	40	1.0	3.1	3.5
	HU048-A4S	460/480/3/60	45	6.3	1.5	2.2	12.5	20	1.0	1.6	2.0
5	HU060-A3S	208/230/3/60	150	21.4	3.0	8.2	35.1	50	1.5	4.4	5.5
	HU060-A4S	460/480/3/60	62	8.8	3.0	4.1	16.1	25	1.5	2.2	2.5

In the interest of product improvements, specifications are subject to change without notice.  
Current technical information available online or call 888-324-7722.

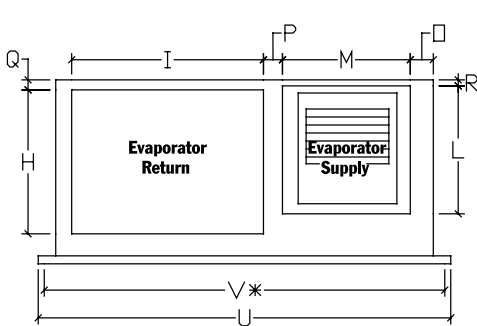
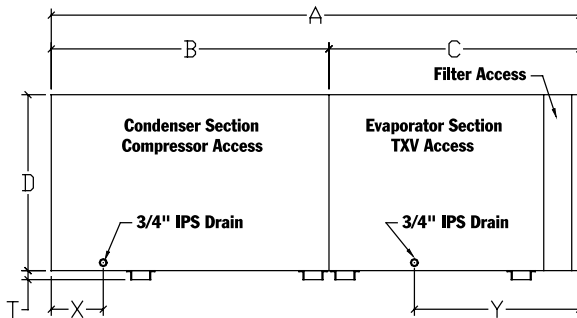


City of New York  
MEA141-91-E

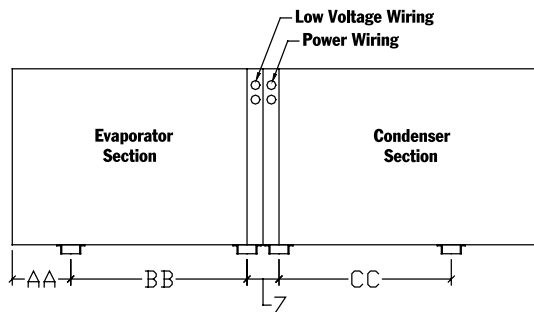
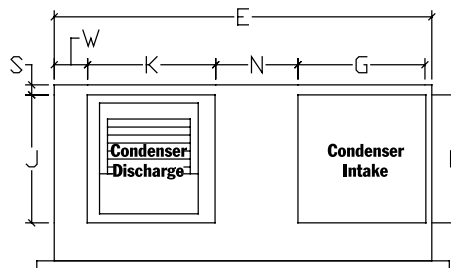
Meets City of Chicago  
Code, when specified

# DualPac 6- & 8-Ton Dual-Compressor Air Conditioning System Dimensional Data

HU072, HU096



\* Center to center length for holes in hanging channel.



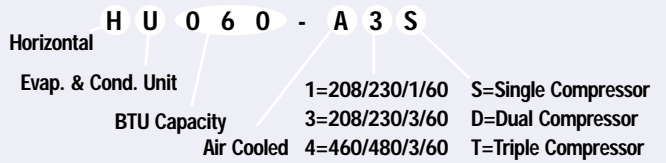
## HORIZONTAL SERIES

### Cabinet Dimensions (inches)

HU072, HU096	
A	71-3/4
B	40-3/8
C	31-3/8
D	27
E	55-1/4
F	Cond Intake, height: 20
G	Cond Intake, width: 18
H	Evap Return, height: 23
I	Evap Return, width: 32
J	Cond Discharge, height: 20
K	Cond Discharge, width: 18
L	Evap Supply, height: 18
M	Evap Supply, width: 16
N	15-1/8
O	2-3/4
P	2-3/8
Q	1-1/4
R	3-1/2
S	2-1/4
T	1-1/8
U	61
V	59
W	3-1/2
X	6-1/2
Y	20-1/2
Z	4
AA	7-1/2
BB	22-1/4
CC	27-1/4

### Weight (lbs)

HU072	HU096
860	900



### Performance Data for DualPac Series

Nominal Tons	Evaporator		Condenser		E.A.T.		75° Ambient		95° Ambient	
	CFM*	Fan Size	CFM*	Fan Size	DB	WB	Total	Sensible	Total	Sensible
6	2400	12 x 9	3800	15 x 9	86	72	89,000	66,000	80,000	58,000
					80	67	85,000	64,000	76,000	57,000
					75	62	81,000	62,000	72,000	56,000
8	3200	12 x 9	4250	15 x 9	86	72	115,000	86,000	101,000	75,000
					80	67	108,000	81,000	100,000	73,000
					75	62	105,000	79,000	94,000	71,000

\*CFM field adjustable from 0.1" to 1.0" external static pressure.

### Electrical Data for DualPac Series Packaged Unit Installation

Nominal Tons	Model	Voltage	Compressor		Condenser Motor		Evaporator Motor		Main Circuit	Max. Fuse
			LRA	RLA	HP	FLA	HP	FLA	Ampacity	Size
6	HU072-A3D	208/230/3/60	110	12	2.0	6.0	2.0	6.0	39.0	50
	HU072-A4D	460/480/3/60	39	5.2	2.0	3.0	2.0	3.0	18.6	25
8	HU096-A3D	208/230/3/60	130	16.8	3.0	8.2	3.0	8.2	54.2	70
	HU096-A4D	460/480/3/60	45	6.3	3.0	4.1	3.0	4.1	26.7	35

### Electrical Data for DualPac Series Split Unit Installation

Nominal Tons	Model	Voltage	Condensing Unit						Evaporator		
			Compressor		Condenser Motor		Min. Circuit	Max. Fuse	Evaporator Motor		Max. Fuse
			LRA	RLA	HP	FLA	Ampacity	Size	HP	FLA	Size
6	HU072-A3D	208/230/3/60	110	12	2.0	6.0	33.0	40	2.0	6.0	7.5
	HU072-A4D	460/480/3/60	39	5.2	2.0	3.0	15.6	20	2.0	3.0	3.5
8	HU096-A3D	208/230/3/60	130	16.8	3.0	8.2	46.0	60	3.0	8.2	10.0
	HU096-A4D	460/480/3/60	45	6.3	3.0	4.1	22.6	30	3.0	4.0	5.0

In the interest of product improvements, specifications are subject to change without notice.

Current technical information available online or call 888-324-7722.



City of New York  
MEA141-91-E

Meets City of Chicago  
Code, when specified

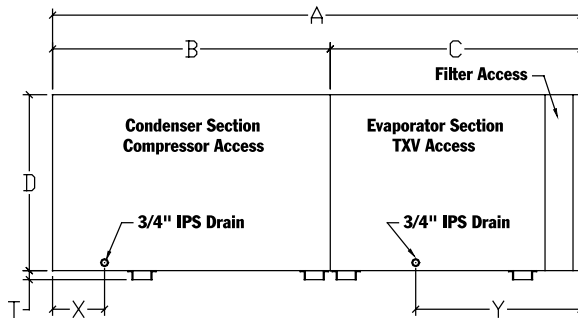
# MaxPac 10-, 12- & 15-Ton Multi-Compressor Air Conditioning System Dimensional Data

## HORIZONTAL SERIES

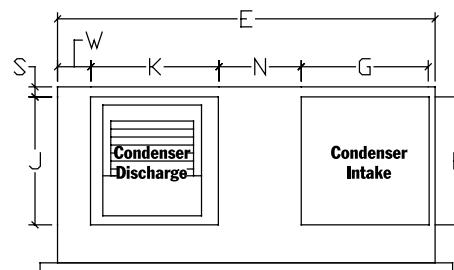
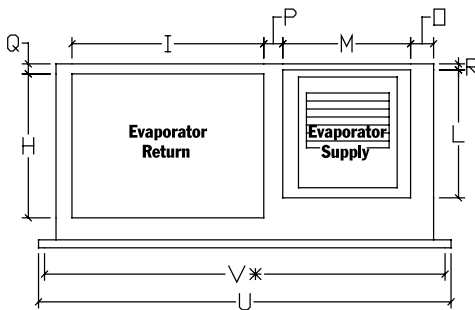
### Cabinet Dimensions (inches)

HU120, HU144, HU180

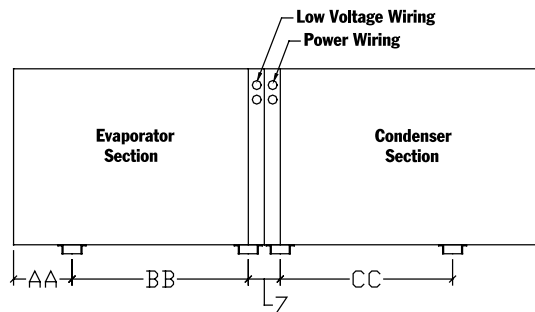
HU120, HU144, HU180



A	89-7/8
B	55-1/8
C	34-3/4
D	29
E	70-3/8
F	Cond Intake, height: 24
G	Cond Intake, width: 30
H	Evap Return, height: 25
I	Evap Return, width: 46-1/4
J	Cond Discharge, height: 24
K	Cond Discharge, width: 24
L	Evap Supply, height: 20
M	Evap Supply, width: 18
N	12-1/8
O	1-3/4
P	2-3/8
Q	1-1/4
R	2-1/4
S	2-1/4
T	1-1/8
U	74
V	72
W	3-1/2
X	6-1/2
Y	20-1/2
Z	4-1/2
AA	7-1/2
BB	25-1/4
CC	43

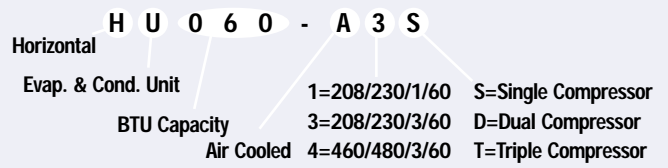


\* Center to center length for holes in hanging channel.



### Weight (lbs)

HU120	HU144	HU180
1340	1440	1490



### Performance Data for MaxPac Series

Nominal Tons	Evaporator		Condenser		E.A.T.		75° Ambient		95° Ambient	
	CFM*	Fan Size	CFM*	Fan Size	DB	WB	Total	Sensible	Total	Sensible
10	4000	15 x 9	6000	15 x 15	86	72	148,000	107,000	132,000	95,000
					80	67	136,000	102,000	125,000	94,000
					75	62	127,000	101,000	115,000	92,000
12	4800	15 x 9	6000	15 x 15	86	72	178,000	124,000	154,000	110,000
					80	67	160,000	120,000	144,000	108,000
					75	62	147,000	117,000	135,000	105,000
15	5400	15 x 9	6300	15 x 15	86	72	226,000	200,000	219,000	179,000
					80	67	219,000	191,000	197,000	169,000
					75	62	206,000	178,000	183,000	150,000

\*CFM field adjustable from 0.1" to 1.0" external static pressure.

### Electrical Data for MaxPac Series Packaged Unit Installation

Nominal Tons	Model	Voltage	Compressor		Condenser Motor		Evaporator Motor		Main Circuit Ampacity	Max. Fuse Size
			LRA	RLA	HP	FLA	HP	FLA		
10	HU120-A3D	208/230/3/60	150	12	5.0	14.0	3.0	8.2	70.4	90
	HU120-A4D	460/480/3/60	62	8.8	5.0	7.0	3.0	4.1	32.7	45
12	HU144-A3T	208/230/3/60	130	16.8	5.0	14.0	5.0	13.0	81.6	100
	HU144-A4T	460/480/3/60	45	6.3	5.0	7.0	5.0	6.5	40.2	50
15	HU180-A3T	208/230/3/60	150	16.8	5.0	14.0	5.0	13.0	96.5	120
	HU180-A4T	460/480/3/60	62	8.8	5.0	7.0	5.0	6.5	44.7	55

### Electrical Data for MaxPac Series Split Unit Installation

Nominal Tons	Model	Voltage	Condensing Unit						Evaporator		
			Compressor		Condenser Motor		Min. Circuit Ampacity	Max. Fuse Size	Evaporator Motor		Max. Fuse Size
			LRA	RLA	HP	FLA			HP	FLA	
10	HU120-A3D	208/230/3/60	150	12	5.0	14.0	62.2	90	3.0	8.2	15.0
	HU120-A4D	460/480/3/60	62	8.8	5.0	7.0	28.6	40	3.0	4.1	10.0
12	HU144-A3T	208/230/3/60	130	16.8	5.0	14.0	68.6	90	5.0	13.0	25.0
	HU144-A4T	460/480/3/60	45	6.3	5.0	7.0	33.6	45	5.0	6.5	15.0
15	HU180-A3T	208/230/3/60	150	16.8	5.0	14.0	83.5	110	5.0	13.0	25.0
	HU180-A4T	460/480/3/60	62	8.8	5.0	7.0	38.2	45	5.0	6.5	15.0

In the interest of product improvements, specifications are subject to change without notice.  
Current technical information available online or call 888-324-7722.



City of New York  
MEA141-91-E

Meets City of Chicago  
Code, when specified